

## 10 ACCESSORIES

### 10.1 COBRA 40-10 ACCESSORIES

#### Accessories list for Cobra 40-10

Pos	K	Order No.	Designation
A		2301858	Diaphragm pump Cobra 40-10
1	◆	322912	Hydraulic oil (for pressure stage) 250 ml; 250 cc
2	◆	236219	Grounding cable 3 m; 9.8 ft
3		2333479	AirCoat filter pressure regulator
4		341434	Double open-end wrench
7		2325343	Fitting DF-MM-R1/4"-M12-PN270-SSt
11		2323325	Air suction filter DN25
12		2329046	Return hose DN6-PN310-G1/4"-PA
13		2324116	Suction hose DN25
14		2333163	Return tube for item 15
15		341267	Hopper set Ex 5 L; 1.3 gal
16		2321424	Small quantity cup
17		2324110	Suction hose DN16
20		322052	Frame, complete
21		2332143	Wall mount 4", complete
24		2323396	Air suction filter DN16
25		2325901	Trolley 4", complete
51	◆	322911	Oil filling set with 100 ml; 100 cc syringe
52	◆	322916	Air coupling set DN 10 mm; 0.39 inch
53	◆	9985619	Hose connector with sealing ring

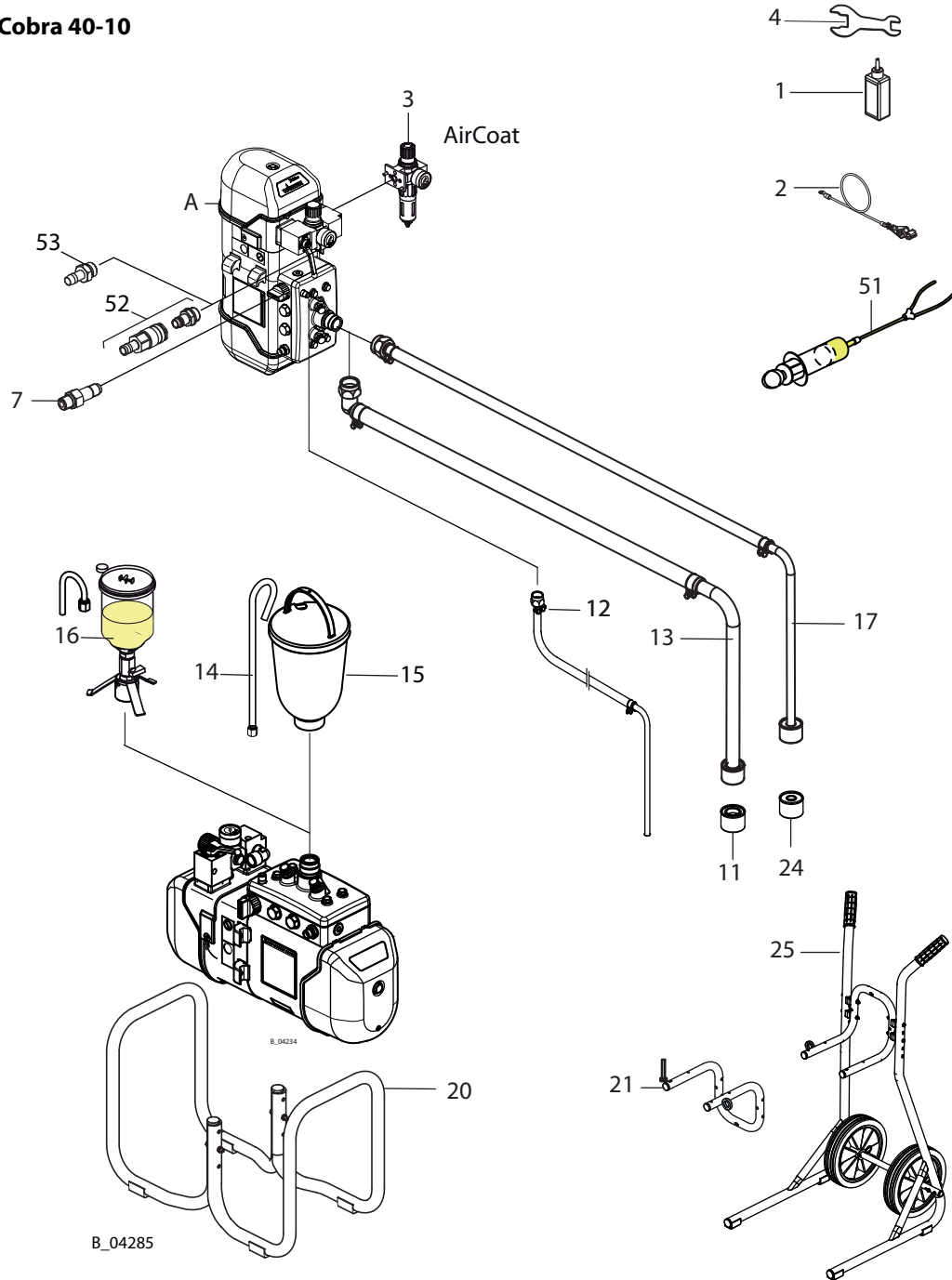
◆ = Wearing parts

Regarding position 7:

Fitting (7) can be screwed in instead of the relief valve. In this case, the required ball valve must be provided by the customer. The return hose can no longer be connected to the "return socket" output.



**Cobra 40-10**



## 11 SPARE PARTS

### 11.1 HOW CAN SPARE PARTS BE ORDERED?

Always supply the following information to ensure delivery of the right spare part:

#### Order number, designation, and quantity

The quantity need not be the same as the number given in the "Stk" column in the lists. This number merely indicates how many of the respective parts are used in each component.

The following information is also required to ensure smooth processing of your order:

- Billing address
- Delivery address
- Name of the person to be contacted in the event of any queries
- Type of delivery (normal mail, express delivery, air freight, courier, etc.)



#### Identification in spare parts lists

Explanation of column "K" (labeling) in the following spare parts lists:

- ◆ Wearing parts

**Note:** No liability is assumed for wearing parts.

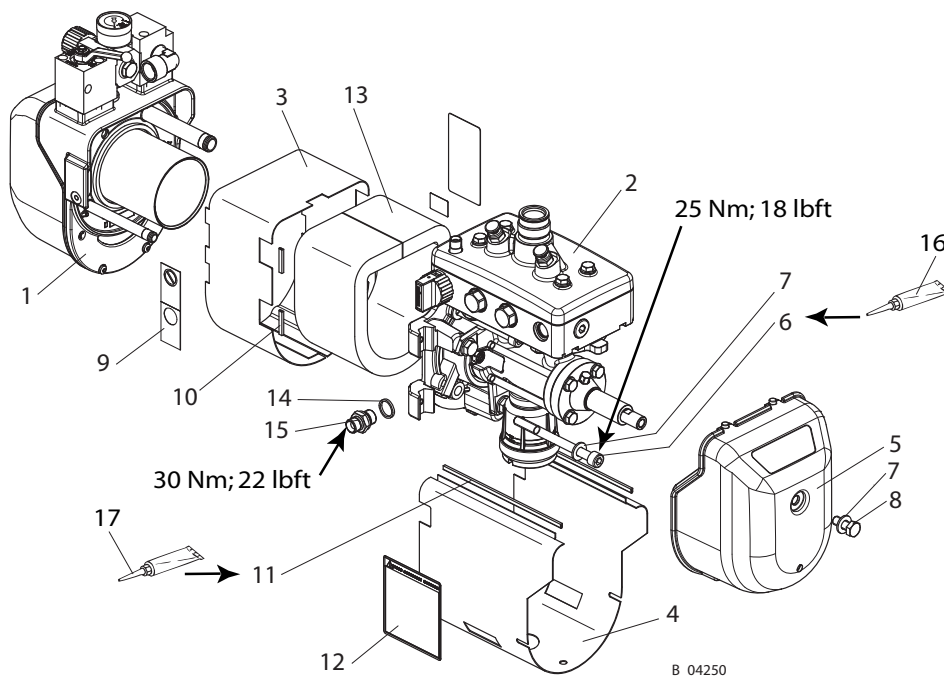
- Not part of the standard equipment but available as a special accessory.

	<p> <b>WARNING</b></p> <p><b>Incorrect maintenance/repair!</b> Risk of injury and damage to the device.</p> <ul style="list-style-type: none"> <li>→ Have repairs and part replacements carried out only by specially trained staff or a WAGNER service center.</li> <li>→ Before all work on the device and in the event of work interruptions:             <ul style="list-style-type: none"> <li>- Switch off the energy/compressed air supply.</li> <li>- Relieve the pressure from the spray gun and device.</li> <li>- Secure the spray gun against actuation.</li> </ul> </li> <li>→ Observe the operating manual and service instructions at all times when carrying out work.</li> </ul>
---	--

## 11.2 OVERVIEW OF THE COBRA 40-10 COMPONENTS

Pos	K	Stk	Order No.	Designation
1		1	-	Air motor 3/53
2		1	-	Preassembled Cobra 40-10 fluid section
3		1	322436	Air motor casing
4		1	322437	Pressure stage casing
5		1	322235	Hood 4 with air outlet
6		3	9907224	Hexagon socket head cap screw
7		4	9920106	Washer
8		1	9900107	Hexagon screw
9		1	2332077	Warning label
10		4	9999211	Edge protection profile 30 mm; 1.18 inch
11		2	9999211	Edge protection profile 164 mm; 6.46 inch
12		1	2332082	Fluid warning label
13		1	322438	Cylinder noise insulation
14	◆	1	9974112	Sealing ring
15		1	367913	Fitting-DF-MM-G3/8"-M16x1.5-PN530-SSt
16		1	9992616	Molykote DX grease
17		1	9992699	Loctite 406

◆ = Wearing parts



**11.3 COBRA 40-10 AIR MOTOR**

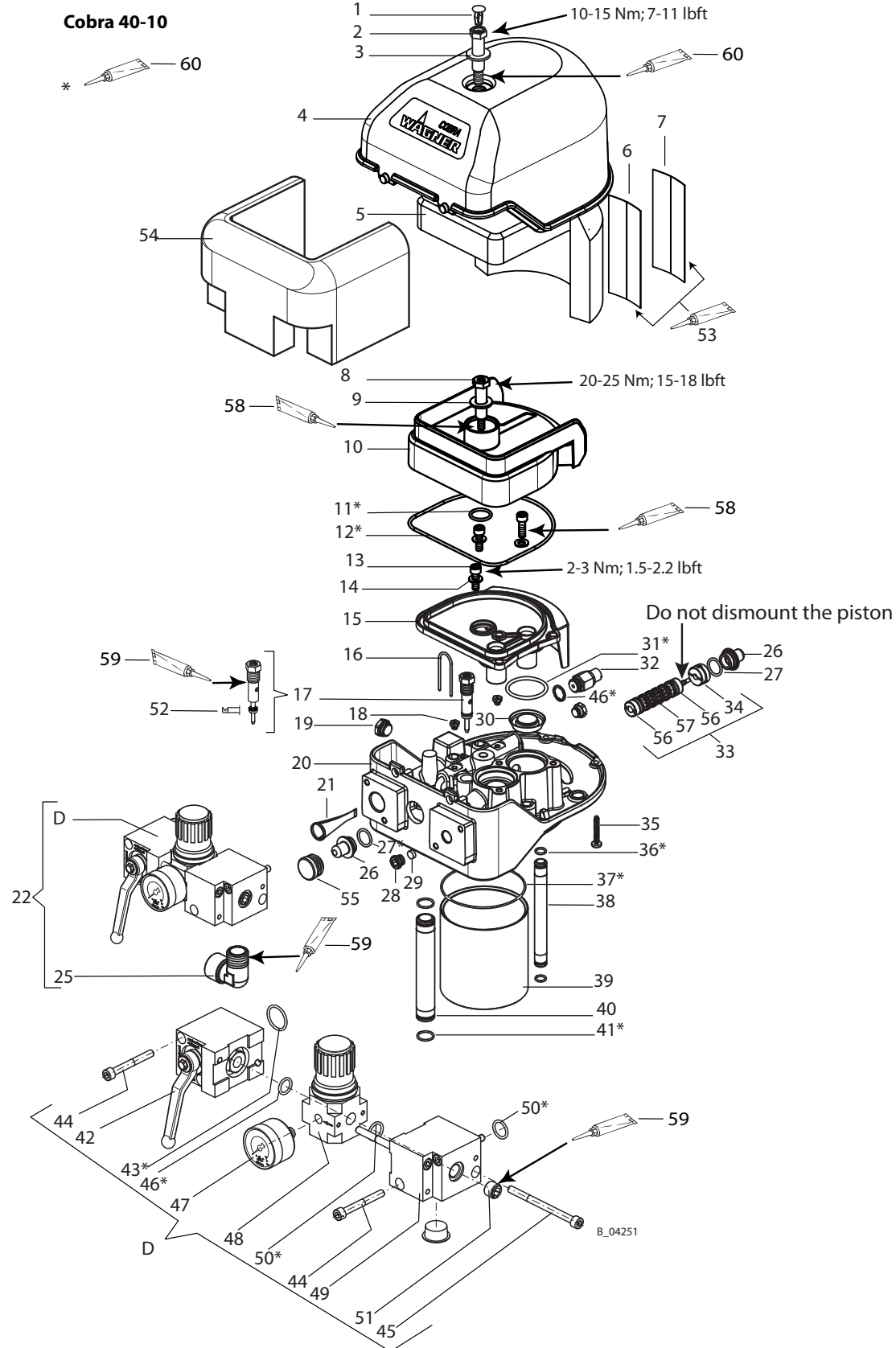
Pos	K	Stk	Order No.	Designation
1		1	9998718	Drive fastener
2		1	367318	Shoulder screw 4
3		1	9925033	Washer
4		1	367311	Hood 4
5	◆	1	367319	Sound absorbing mat 4
6		1	9999152	Velcro fastener coating part
7		1	9999151	Velcro fastener adhesive part
8		1	367318	Shoulder screw 4
9		1	9925033	Washer
10		1	367310	Silencer 4
11	◆ ★	1	9974098	O-ring
12	◆ ★	1	9974097	O-ring
13		3	9900325	Socket cap screw
14		3	9920103	Washer A6.4
15		1	367309	Connecting part 4
16		2	367320	Cotter pin
17	◆	1	369290	Pilot valve
18		2	9998674	Threaded plug
19		1	9998274	Threaded plug
20		1	367315	Control housing 4
21	◆ ★	1	367313	Compressed air filter 4/6
22		1	2328606	Pressure regulator unit 4
25		1	9999228	Threaded connector L
26		2	367307	Sealing plug 4/6
27	◆ ★	2	9974085	O-ring
28		1	367324	Filter holder
29	◆ ★	1	367314	Control air filter
30	◆ ★	1	322910	Cobra outlet seal set (consisting of 2 seals)
31	◆ ★	2	9974095	O-ring
32		1	368285	Safety valve 0.63 MPa; 6.3 bar; 91 psi
33	◆	1	9943080	Spool and sleeve assembly, complete
34	◆	1	368038	Detent body, complete, ISO 1/2
35		2	9907126	Screw SFS Plastite 45
36	◆ ★	2	9974089	O-ring
37	◆ ★	2	9974115	O-ring
38		1	322432	Control air pipe
39		1	322430	Cylinder pipe
40		1	322431	Compressed air pipe
41	◆ ★	2	9971448	O-ring
42	◆	1	2310635	Edge ball valve mini 4

◆ = Wearing parts

★ = Included in service set

● = Not part of the standard equipment but available as a special accessory.

**OPERATING MANUAL**

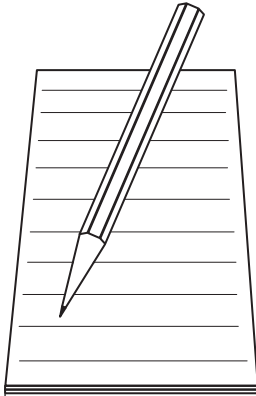


Pos	K	Stk	Order No.	Designation
43	◆ ★	1	9971137	O-ring
44		4	9900316	Hexagon socket head cap screw M6x50
45		2	9907039	Hexagon socket head cap screw M6x80
46	◆ ★	1	9971313	O-ring
47	◆	1	2341175	Manometer with air regulator 0-10 bar, G1/8"
48	◆	1	9998676	Pressure regulator
49		1	-	Distributor piece mini 4
50	◆ ★	2	9974166	O-ring
51		1	9904407	Locking screw R1/4
52	◆	1	9974217	Rod seal
53		1	9992816	Adhesive
54	◆	1	322439	Air motor noise insulation
55		1	9990861	Ribbed plug
56	◆	2	368313	Damper ISO1 and ISO2
57	◆	6	9971123	O-ring
58		1	9992590	Loctite 222 50 ml; 50 cc
59		1	9992831	Loctite 542 50 ml; 50 cc
60		1	9992616	Molykote DX grease
			2341627	Cobra 40-10 air motor service set

◆ = Wearing parts

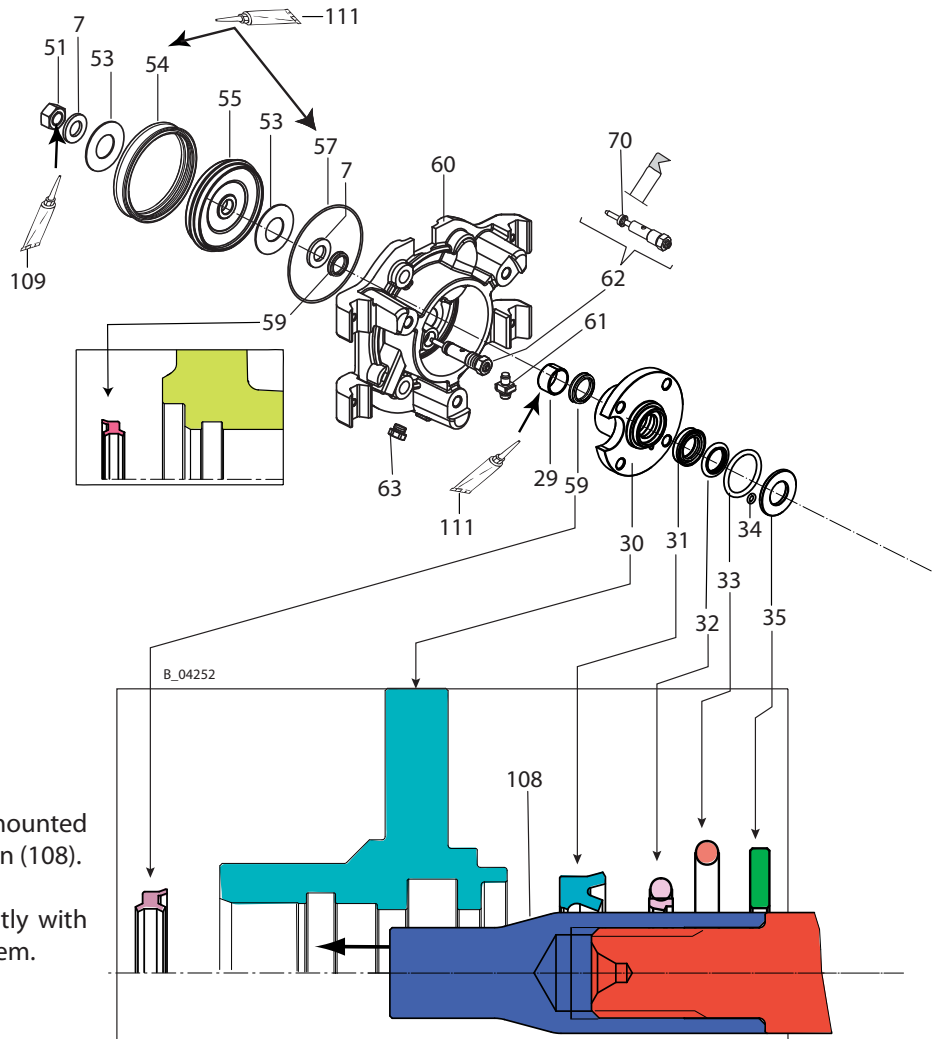
★ = Included in service set

● = Not part of the standard equipment but available as a special accessory.



A large rectangular area with horizontal lines, intended for handwritten notes or instructions.

**11.4 COBRA 40-10 FLUID SECTION**



**Notes:**  
 The piston rod (25) may only be mounted with the screwed-on assembly pin (108).

Grease all o-rings and seals lightly with grease (111) before mounting them.

**Cobra 40-10 fluid section**

Pos	K	Stk	Order No.	Designation
1		1	2329898	Sealing sleeve
2		4	9900204	Hexagon screw
3		4	9920102	Washer
4		2	341241	Inlet valve depressor, complete, see Chapter 11.10
5		1	2330764	Inlet housing

◆ = Wearing parts

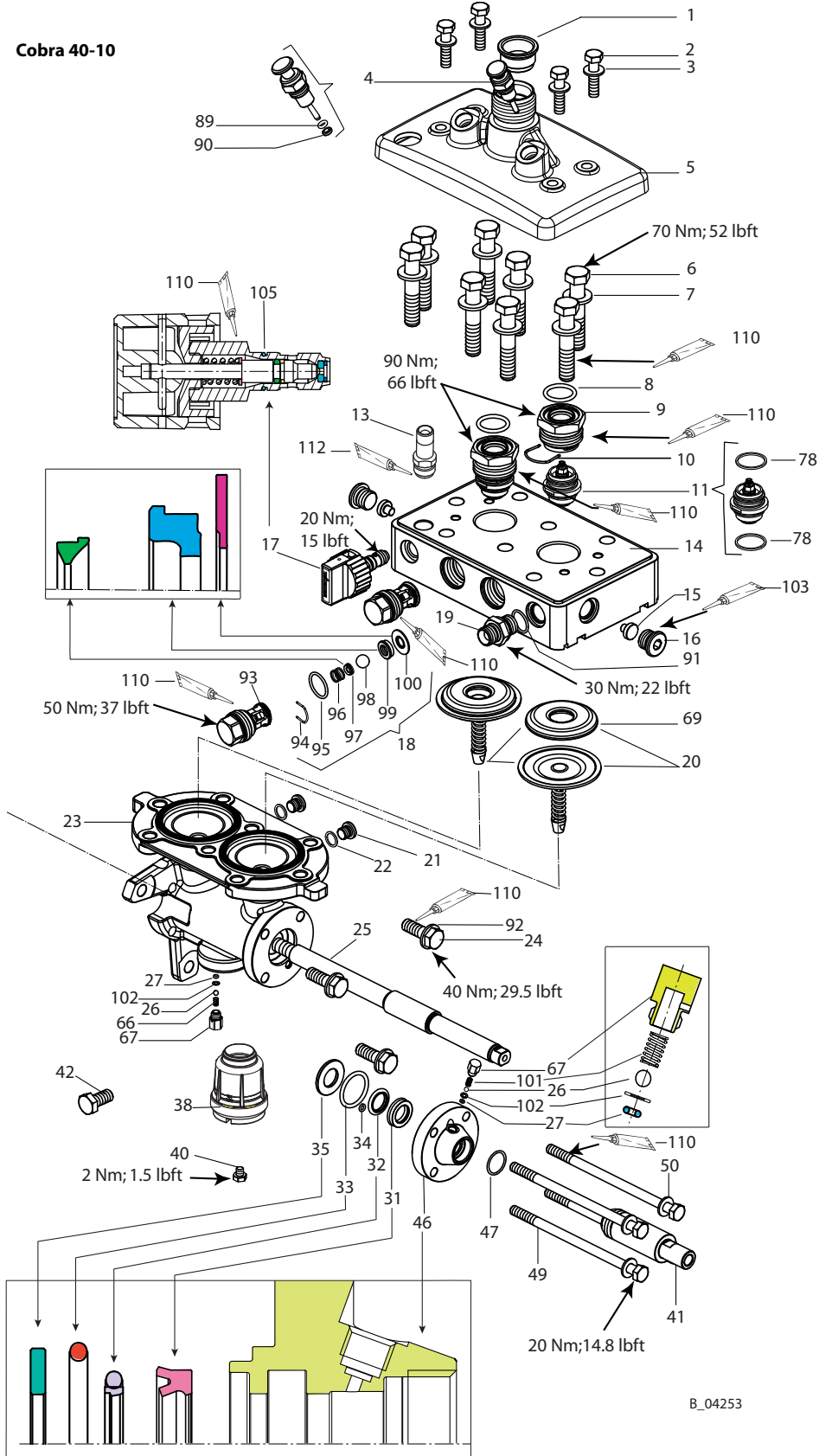
★ = Included in the service set for Cobra 40-10 fluid section

● = Not part of the standard equipment but available as a special accessory.

OPERATING MANUAL



Cobra 40-10



B\_04253

**Cobra 40-10 fluid section**

Pos	K	Stk	Order No.	Designation
6		8	9907234	Hexagon screw
7		10	9920107	Washer
8	◆ ★	2	9974184	O-ring
9		2	322411	Valve fitting
10		2	341336	Clasp
11	◆ ★	1	322914	Inlet valve set, complete (comprising 2 valves), see Chapter 11.9
13		1	2330810	Connection piece
14		1	322410	Fluid section
15		2	322412	Plug
16		2	9904311	Screw plug
17	◆	1	169248	Relief valve, complete, see Chapter 11.11
18	◆ ★	1	322915	Outlet valve set, complete (spare parts for 2 valves)
19		1	367913	Double connector M16x1.5 -G3/8"
19		1	367555	Double connector NPSM1/4" -G3/8"
20	◆ ★	1	322913	Complete diaphragm set with insert (comprising 2 diaphragms)
21		2	9904306	Screw plug
22	◆	2	9970127	Sealing ring
23		1	322401	Pressure stage D19/53
24		3	9907041	Hexagon screw
25		1	322402	Piston rod D19/53
26		2	9941502	Ball
27	◆	2	9971189	O-ring
29		1	9962028	Permaglide bushing
30		1	322403	Pressure stage flange
31	◆	2	9974182	Rod sealing profile BS
32	◆	2	9974183	Rod sealing set
33	◆	2	9974186	O-ring
34	◆	2	9971446	O-ring
35		2	322405	Pressure disk
36		1	2339250	Oil suction fitting
37	◆	1	115944	O-ring
38		1	2333498	Oil tank, complete
40		1	9998274	Threaded plug M7x1
41		1	322435	Piston cover
42		1	2334842	Pressure relief valve
46		1	322404	Pressure stage cover disk
47	◆	1	9974074	O-ring
49		4	9907233	Hexagon screw
50		4	9920102	Washer
51		1	9910101	Hexagon nut

◆ = Wearing parts

★ = Included in the service set for Cobra 40-10 fluid section

● = Not part of the standard equipment but available as a special accessory.

**Cobra 40-10 fluid section**

Pos	K	Stk	Order No.	Designation
53	◆	2	322427	Damping washer
54	◆	1	9974181	Piston sealing profile Z5
55		1	322426	Piston air motor 3
57	◆	1	9974115	O-ring
59	◆	2	9974185	Seal wiper ring, profile EM
60		1	322425	Air motor flange
61		1	367258	Grounding, complete
62	◆	1	369290	Pilot valve
63		1	9998675	Threaded plug
66		1	9998780	Pressure spring
67		2	322407	Oil valve screw
68	◆	3	9971162	O-ring
69		2	322415	Insert
70	◆	1	9974217	Rod seal
78	◆	4	341331	Sealing ring
89	◆ ★	2	9971486	O-ring (solvent-resistant)
90	◆	2	341316	Scraper
91	◆	1	9974112	Sealing ring
92		3	9920106	Washer
93		2	341325	Valve guide
94		2	341328	Clasp
95	◆	2	9971470	O-ring
96		2	341326	Pressure spring
97		2	253405	Spring support ring
98	◆	2	9941501	Ball 11 HM
99	◆	2	341327	Outlet valve seat
100	◆	2	341347	Sealing ring
101		1	9994237	Pressure spring
102	◆	2	322408	Oil valve pressure ring
103		1	9992590	Loctite 222 50 ml; 50 cc
104		1	9992831	Loctite 542 50 ml; 50 cc
105	◆ ★	1	9971395	O-ring 10x1.25
106		1	2312288	Service set for Cobra 40-10 fluid section
107		1	322917	Service set for Cobra 40-10 piston (incl. items 25, 31, 32, 33, 59, and 108)
108		1	322930	Piston rod assembly pin
109		1	9992511	Loctite 243 50 ml; 50 cc
110		1	9992616	Molykote DX grease
111		1	9998808	Mobilux EP 2 grease
112		1	9992528	Loctite 270 50 ml; 50 cc

◆ = Wearing parts

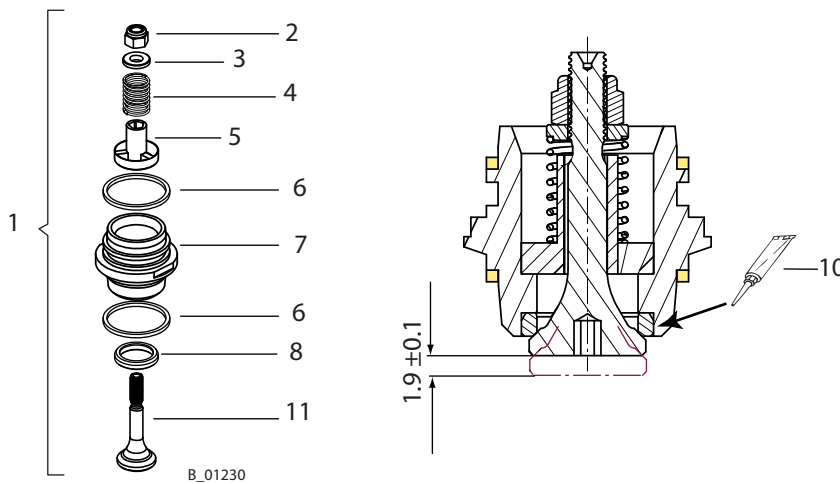
★ = Included in the service set for Cobra 40-10 fluid section

● = Not part of the standard equipment but available as a special accessory.

**11.9 COBRA 40-10 INLET VALVE**

Pos	K	Stk	Order No.	Designation
1	◆	1	322914	Complete Cobra 40-10 inlet valve set
2		2	9912100	Hexagon nut with clamp
3		2	344334	Spring guide
4		2	190304	Pressure spring
5		2	158333	Guide
6	◆	4	341331	Sealing ring
7		2	344322	Valve housing
8	◆	2	340346	Valve seat
10	◆	1	9992528	Loctite 270 50 ml; 50 cc
11		2	340342	Valve cone

◆ = Wearing parts

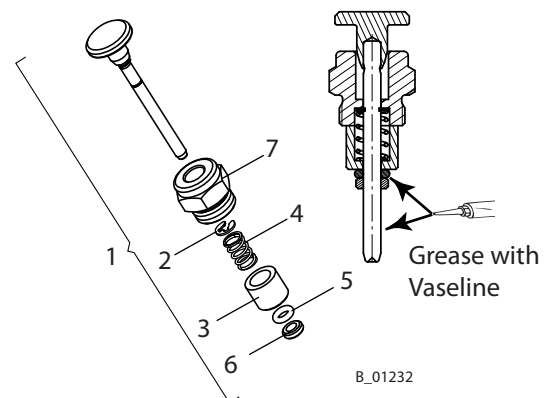


**Note:**  
Item 8 -> adhesive area:  
Pretreated with fast cleaner  
Loctite type 7063.

**11.10 INLET VALVE DEPRESSOR**

Pos	Stk	Order No.	Designation
1	1	341241	Inlet valve depressor, complete
2	1	9922724	Lock washer 3.2
3	1	341377	Sleeve
4	1	9994275	Pressure spring
5	◆	9971486	O-ring 4x2
6	◆	341316	Scraper
7	1	341375	Screw plug

◆ = Wearing parts



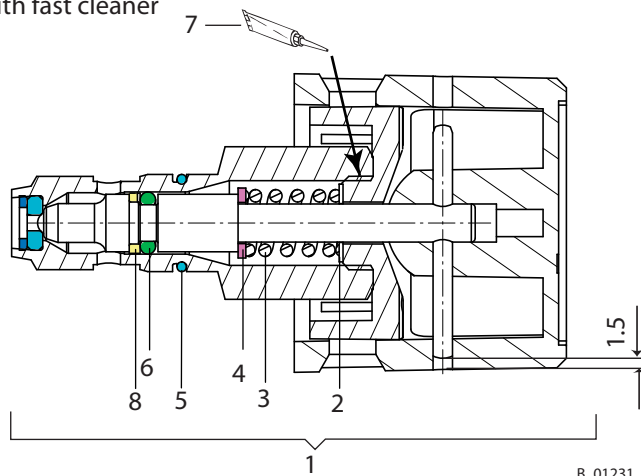
B\_01232

**11.11 RELIEF VALVE**

Pos	K	Stk	Order No.	Designation
1	◆	1	169248	Relief valve, complete
2		1	9920602	Adjusting washer
3		1	169346	Pressure spring
4		1	9920202	Washer
5	◆	1	9971395	O-ring 10x1.25
6	◆	1	9971486	O-ring 4x2
7		1	9992528	Loctite 270 50 ml; 50 cc
8	◆	1	9971367	Spiral baking ring 4.78x1.78

◆ = Wearing parts

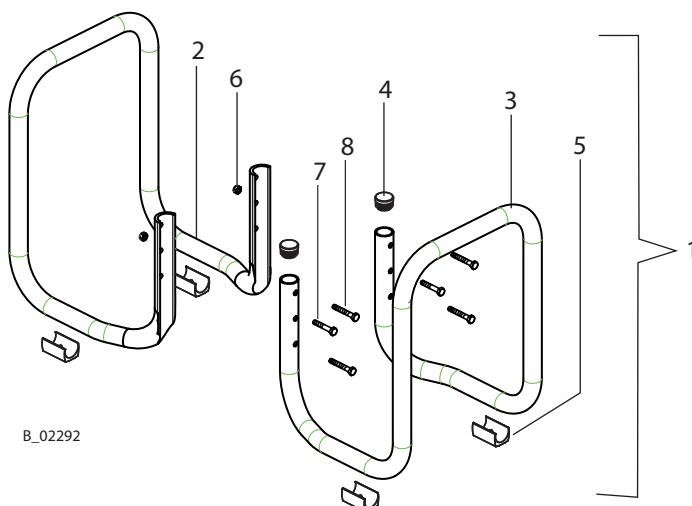
Thread: Pretreated with fast cleaner  
Loctite type 7063.



**11.12 COBRA 40-10 FRAME, COMPLETE**

Pos	K	Stk	Order No.	Designation
1		1	322052	Base frame Cobra 40-10
2		1	322442	Base frame pressed
3		1	322443	Frame pipe
4		2	9990861	Plug
5	◆	4	9999209	Saddle feet for round tubes
6		2	9910204	Self-locking hexagon nut, M6
7		2	9900202	Hexagon screw M6x40
8		4	9900126	Hexagon screw M6x45

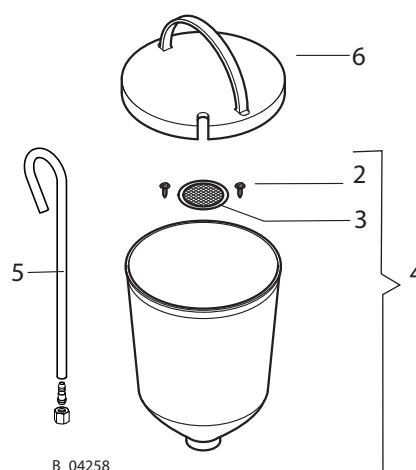
◆ = Wearing parts



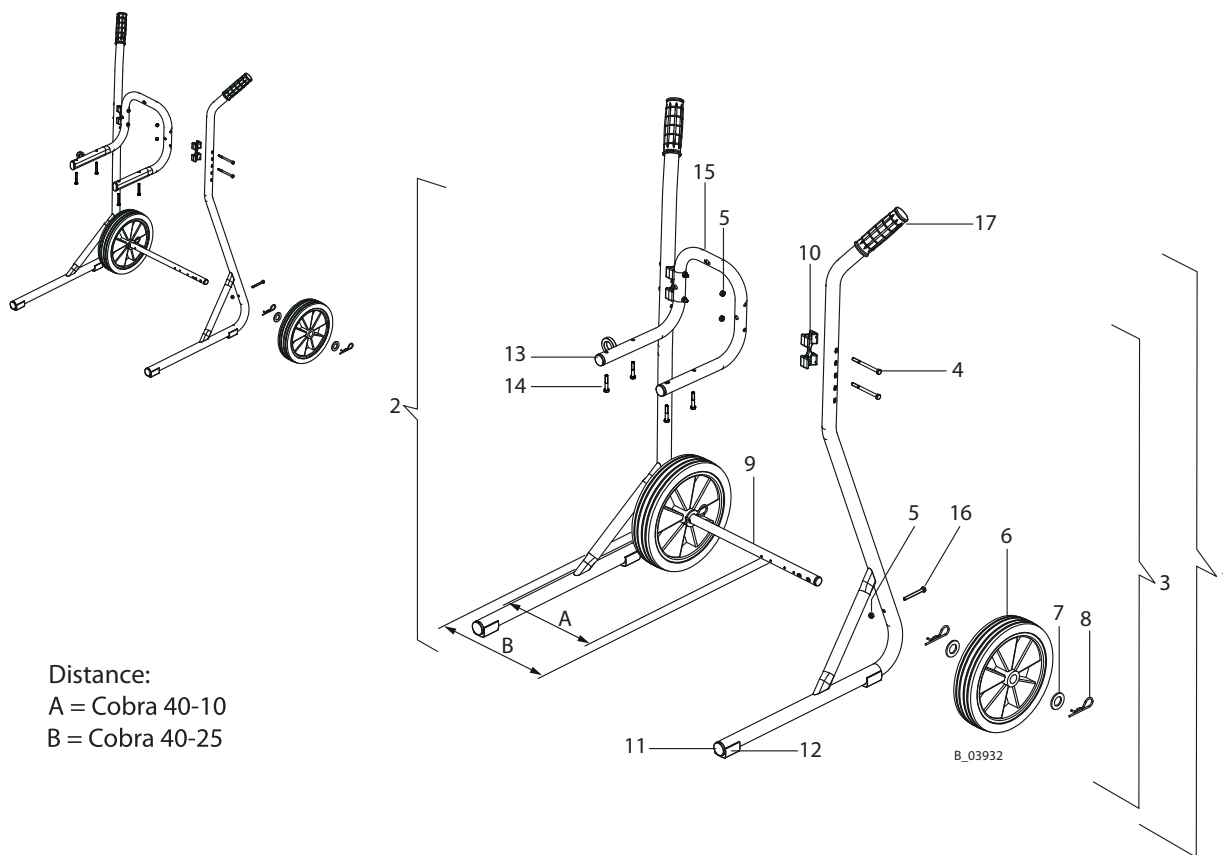
**11.13 HOPPER, COMPLETE**

Pos	K	Stk	Order No.	Designation
1	◆	1	341267	Hopper set Ex, 5 L; 1.3 gal
2		2	9902306	Combination tapping screw
3	◆	1	3756	Filter disk, mesh 0.4 mm; 0.02 inch
3a	◆	1	37607	Filter disk, mesh 0.8 mm; 0.03 inch
4	◆	1	340265	Hopper Ex
5	◆	1	2333163	Relief tube 5 L, complete
6	◆	1	340429	Cover

◆ = Wearing parts



**11.14 TROLLEY**



Distance:  
 A = Cobra 40-10  
 B = Cobra 40-25

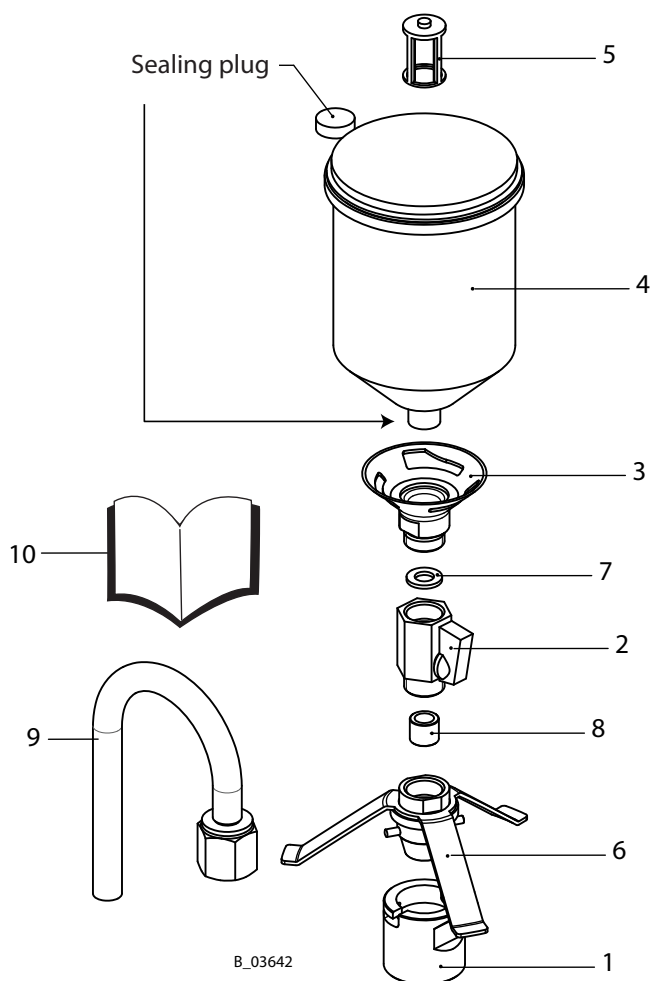
Pos	K	Stk	Order No.	Designation
1		1	2325901	Trolley, complete
2		1	--	Stand, left, 4"-6" (welded)
3		1	--	Stand, right, 4"-6" (welded)
4		4	9907140	Hexagon screw DIN931 M6x75
5		6	9910204	Self-locking hexagon nut, M6
6	◆	2	2304440	Wheel, D250
7		4	340372	Washer
8		4	9995302	Cotter pin
9		1	--	Wheel axle 4"-6"
10	◆	2	367943	Connecting part 4"-6"
11		2	--	Tube plug, ribbed
12		2	--	Saddle feet for round tubes
13		2	--	Plug
14		4	9900218	Hexagon screw
15		1	2332143	Wall mount
16		2	3061695	Hexagon screw without shaft M6x55
17	◆	2	9998747	Handle

◆ = Wearing parts

**11.16 SMALL QUANTITY CUP**

Pos	K	Stk	Order No.	Designation
		1	2321424	Small quantity cup
1		1	2320844	Union nut with bayonet
2	◆	1	2321426	Low-pressure mini ball valve G1/2
3	◆	1	2320841	Gravity feed cup adapter HSM
4	◆	2	2321427	Gravity feed cup SPA easy line TA
5	◆	2	2321676	Sieve insert SPA easy line
6		1	2320888	Cone connector preassembled
7	◆	1	2320870	Sealing washer
8	◆	1	2320922	Sealing sleeve
9	◆	1	2322857	Relief tube 0.5 L, complete
10		1	2322671	Assembly manual

◆ = Wearing parts



B\_03642